

Western States Rural Transportation Consortium Meeting

February 9, 2012

Overview/Agenda

- Welcome / Introductions / Recent ITS Activities
- Western States Forum discussions
- Incubator Project updates
- One Stop Shop Phase 2
- Other Project updates
- Task Order 1 updates
- Task Order 3 updates
- NRITS 2012 discussion
- Other discussions (as needed)

Western States Rural Transportation Technology Implementers Forum

June 12-14, 2012

Yreka, California

Holiday Inn Express

(Tentative) Presentations/Demonstrations

- **Caltrans District 2; Ian Turnbull, Jeremiah Pearce:** Field Element Network Design for a Rural Transportation Management Center
- **Southwest Research Institute; Lynne Randolph:** Investigation into the Usage of Bluetooth Signals for Roadway Speed Calculations
- **Nevada DOT; Mark Aragon, Jon Dickinson:** Mobile ITS Hotspot Trailers, an Evolving Technology
- **WTI; Doug Galarus, Dan Richter:** Technical Development of the Western States One Stop Shop for Rural Traveler Information
- **Georgia DOT; Steve A. Thomas:** Extending ITS Communication Beyond Fiber
- **Oregon State University; David Kim, J. David Porter, Mario Magaña, Amirali Saeedi, SeJoon Park:** Using Bluetooth-based Data Collection Units as Point Detection Systems
- **California Highway Patrol; George Peck:** Rapid Response Incident Command Vehicles
- **Washington State DOT; Bill Legg:** A Cost/Benefit Tool for Rural ITS Devices – The North/West Passage Program's Experiences

Discussion

- 7th Annual Western States Forum
- Registration will open in early March.
- Travel assistance
- Possible WSRTC meeting
- www.westernstatesforum.org

Incubator Project Updates

Survey of Safety Warning Devices

- Synthesis of existing safety warning devices in the western U.S.
- Telephone contacts to obtain specific information of interest
 - Identify location of existing deployments, their function/purpose, and other info

Survey of Safety Warning Devices

- Work to date
 - Preliminary contact list developed
 - Continually expanding through ongoing work
 - Draft survey compiled for steering committee review and feedback

Survey of Safety Warning Devices

- Survey questions

- 1.) Does your agency have any safety warning systems/devices deployed as described, specifically in a rural environment?
- 2.) What systems, specifically are deployed by your agency in rural areas?
- 3.) How long has each system been deployed (approximate year of first deployment/use)?
- 4.) What is the intended purpose of each system (i.e. what problem is it targeting)?
- 5.) Where are these systems located (both general setting and more specific location)?

Survey of Safety Warning Devices

- Questions cont'd

- 6.) What are the components that make up the system (ex. hardware, controls, etc.)? (Please discuss each system individually.)
- 7.) How effective has each system been? (Please discuss each system individually.) This can include any general observations as well as specific, data-driven evaluations. Have any formal evaluations of any system been completed? Are the results available in a report or other documentation?
- 8.) Do you know of anyone else in your state at any level – state, county or city – that employs similar systems to those we have discussed? If so, would you be able to provide their name and agency (as well as further information such as telephone number, if available)?

Survey of Safety Warning Devices

- Discussion points/clarification
 - Are we more concerned with rural devices or all settings?
 - What are we interested in for “location”?
 - General setting? Coordinates? Other?
 - How detailed of information is desired for system components (general versus manufacturer)?

Survey of Safety Warning Devices

- Up-coming work
 - Begin telephone contacts
 - Summarize survey responses/information as it is received

Regional ICM Planning

- Establish guidance and criteria to initiate, plan and develop rural ICM plans
 - Define what rural ICM is and establish factors to consider
- Apply results of USDOT Integrated Corridor Management initiative to the rural environment

Regional ICM Planning

- Work to-date
 - Literature review update
 - Several new documents available since previous review
 - Still focused on urban applications, primarily U.S. DOT demonstration sites
 - Concept of Operations documents developed
 - Selected sites chosen to focus on analysis, modeling and simulation activities, ongoing

Regional ICM Planning

- Work to-date
 - Literature review update cont'd
 - No rural efforts pursued/discussed since initial COATS work
 - Focus has been on ICM pioneer site work
 - Provides a good baseline of information to consult when developing rural planning approach
 - Adaptations made to meet rural conditions/needs

Regional ICM Planning

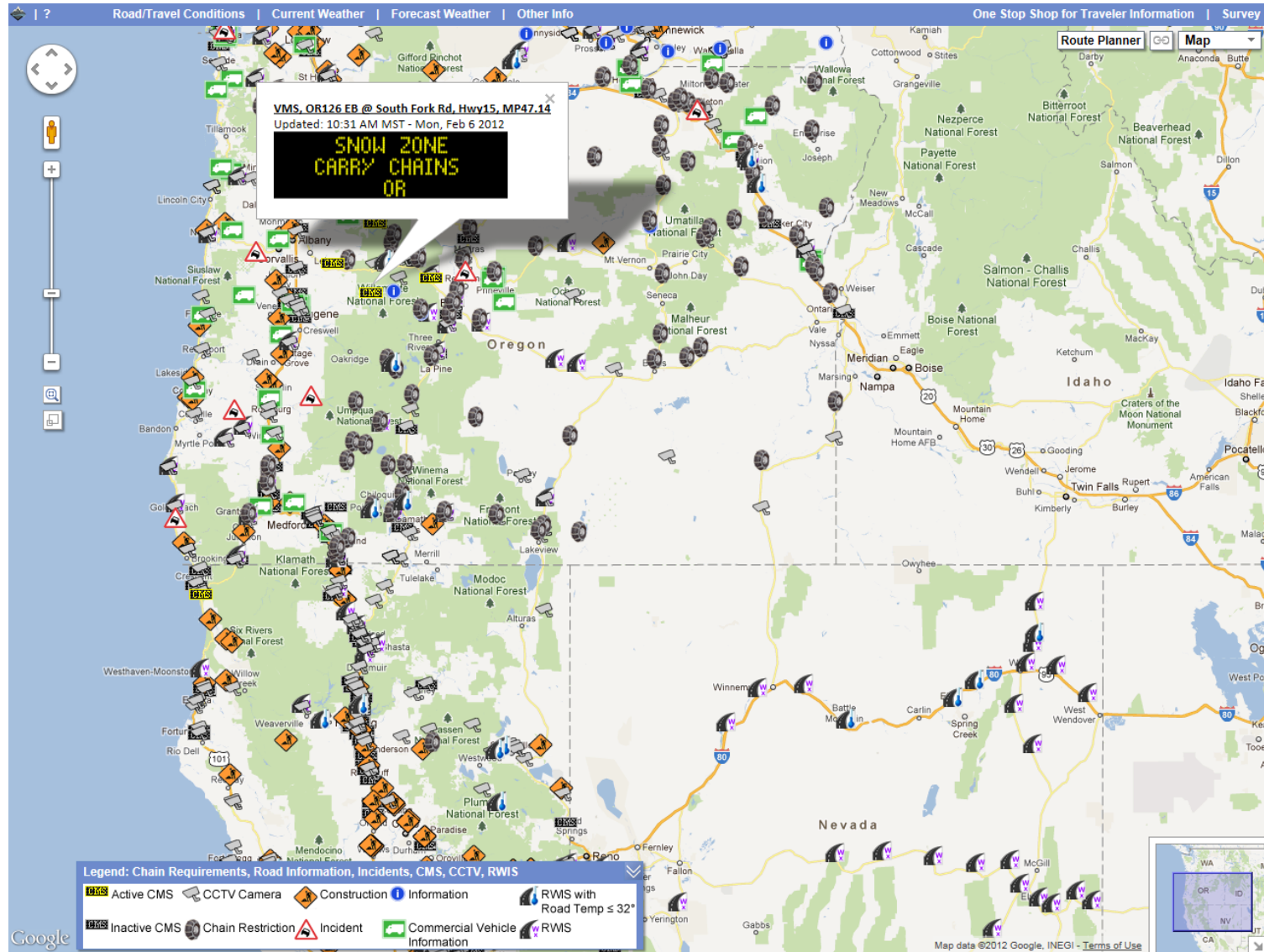
- Work to-date
 - Planning protocols
 - Documents identified, review and summary in progress
 - Adaptations are expected again to meet rural needs

Regional ICM Planning

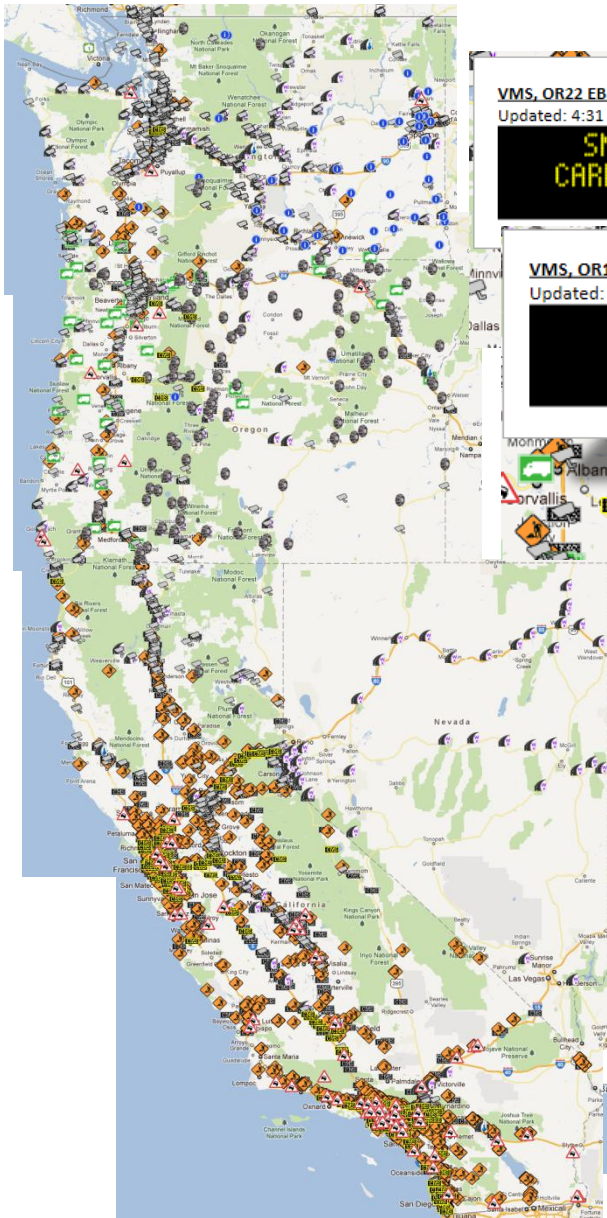
- Upcoming work
 - Document Emergency Operations Center protocols
 - Respective contacts the group may have to obtain information are needed
 - Develop rural ICM planning process

One Stop Shop Phase 2

One Stop Shop: <http://oss.weathershare.org/>



Road/Travel Conditions:



VMS, OR22 EB @ Detroit Ranger Stn, Hwy162, MP48.86
Updated: 4:31 PM MST - Mon, Feb 6 2012

**SNOW ZONE
CARRY CHAINS
OR**

VMS, OR126 EB @ South Fork Rd, Hwy15, MP47.1
Updated: 4:31 PM MST - Mon, Feb 6 2012

**TRACTION
TIRES**

Station ID: 3017
Elevation: 3877 ft.
Source: CA State DOT

windSensorAvgSpeed	0.000 mph	4:35 PM MST - Mon, Feb 6 2012
essDewpointTemp	18.140 F	4:35 PM MST - Mon, Feb 6 2012
precipType	3.000	4:35 PM MST - Mon, Feb 6 2012
essSubSurfaceTemperature	80.060 F	4:35 PM MST - Mon, Feb 6 2012
windSensorAvgDirection	160.000 deg	4:35 PM MST - Mon, Feb 6 2012
windSensorGustDirection	148.000 deg	4:35 PM MST - Mon, Feb 6 2012
essAirTemperature	45.680 F	4:35 PM MST - Mon, Feb 6 2012
essPrecipRate	0.000 in/h	4:35 PM MST - Mon, Feb 6 2012
essSurfaceStatus	4.000	4:35 PM MST - Mon, Feb 6 2012
essSurfaceTemperature	45.320 F	4:35 PM MST - Mon, Feb 6 2012
precipIntensity	3.000	4:35 PM MST - Mon, Feb 6 2012
windSensorGustSpeed	3.107 mph	4:35 PM MST - Mon, Feb 6 2012
essRelativeHumidity	33.000 %	4:35 PM MST - Mon, Feb 6 2012

SAMS VALLEY
Updated: 11:00 AM MST - Mon, Feb 6 2012
Type: Commercial Vehicle Information
Route: ORE234
Milepost: 04
Severity: Informational only
Description:
OR234 Rogue River Bridge at MP 0.04 is restricted to 20,000 lbs. GVW, single axle, 34,000 lbs. tandem axle - 105,500 lbs. GVW, Weight Table 2 Divisible Loads; 21,500 lbs. single axle, 43,000 lbs. tandem axle - 98,000 lbs. GVW, Weight Table 3 Non-Divisible Loads.

Advice:

COOS BAY-ROSEBURG
Time: 1:54 PM MST - Tue, Jan 31 2012
Route: ORE42
Milepost: 44.5
Type: Crash/Hazard
Severity: Estimated delay under 20 minutes
Detail:
A landslide has occurred eastbound lanes are closed, traffic controlled with flaggers, use caution
Advice:

PROSPECT
Updated: 9:47 AM MST - Mon, Feb 6 2012
Milepost: 45.74
Route: ORE62
Temperature: 2.2
Road Conditions: icy patches
Weather Conditions: clear
Snow Depth: 0
Snow Off Road: 10.16
Restrictions:
Carry chains or traction tires.

28.65 to milepost 41.139
Closed out of 2 total lanes
5 AM MST - Thu, Feb 2 2012
ay: 10
6AA

Facility Type: Conventional Hwy
Start/End Date(s):
9:01 AM MST - Mon, Feb 6 2012-3:30 PM MST - Mon, Feb 6 2012
9:01 AM MST - Tue, Feb 7 2012-3:30 PM MST - Tue, Feb 7 2012
9:01 AM MST - Wed, Feb 8 2012-3:30 PM MST - Wed, Feb 8 2012
9:01 AM MST - Thu, Feb 9 2012-3:30 PM MST - Thu, Feb 9 2012
9:01 AM MST - Fri, Feb 10 2012-3:30 PM MST - Fri, Feb 10 2012

Sacramento Hill
10:59 AM MST - Wed, Jan 18 2012

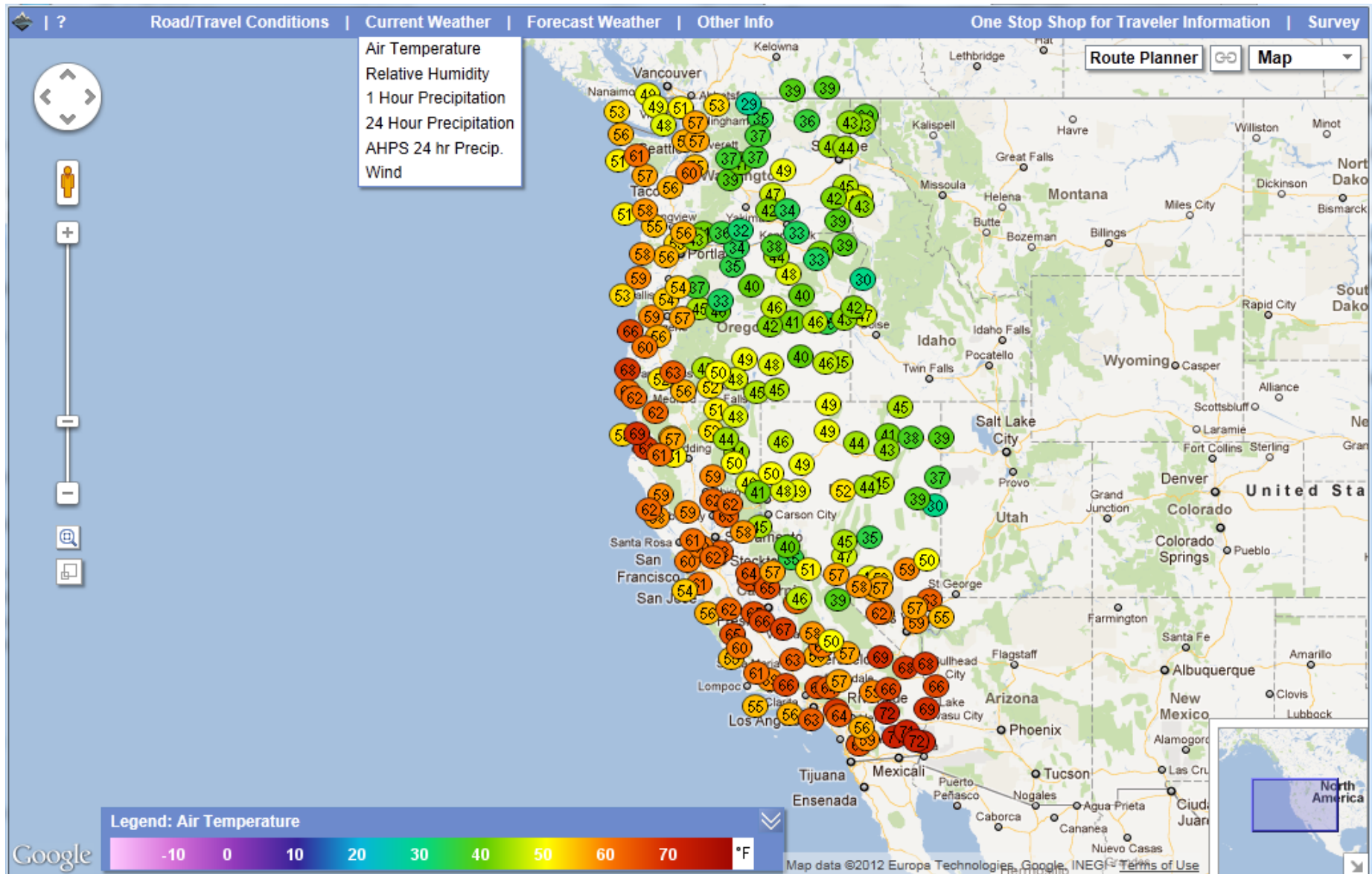


Crystal Mountain Rd
Updated: 3:05 PM MST - Fri, Dec 2 2011
Type: Emergency closure
Route: 410
Milepost: 57.49
Description:
State Route 410 is closed for the winter from Crystal Mountain Boulevard to SR 123 Cayuse Pass due to heavy snow.

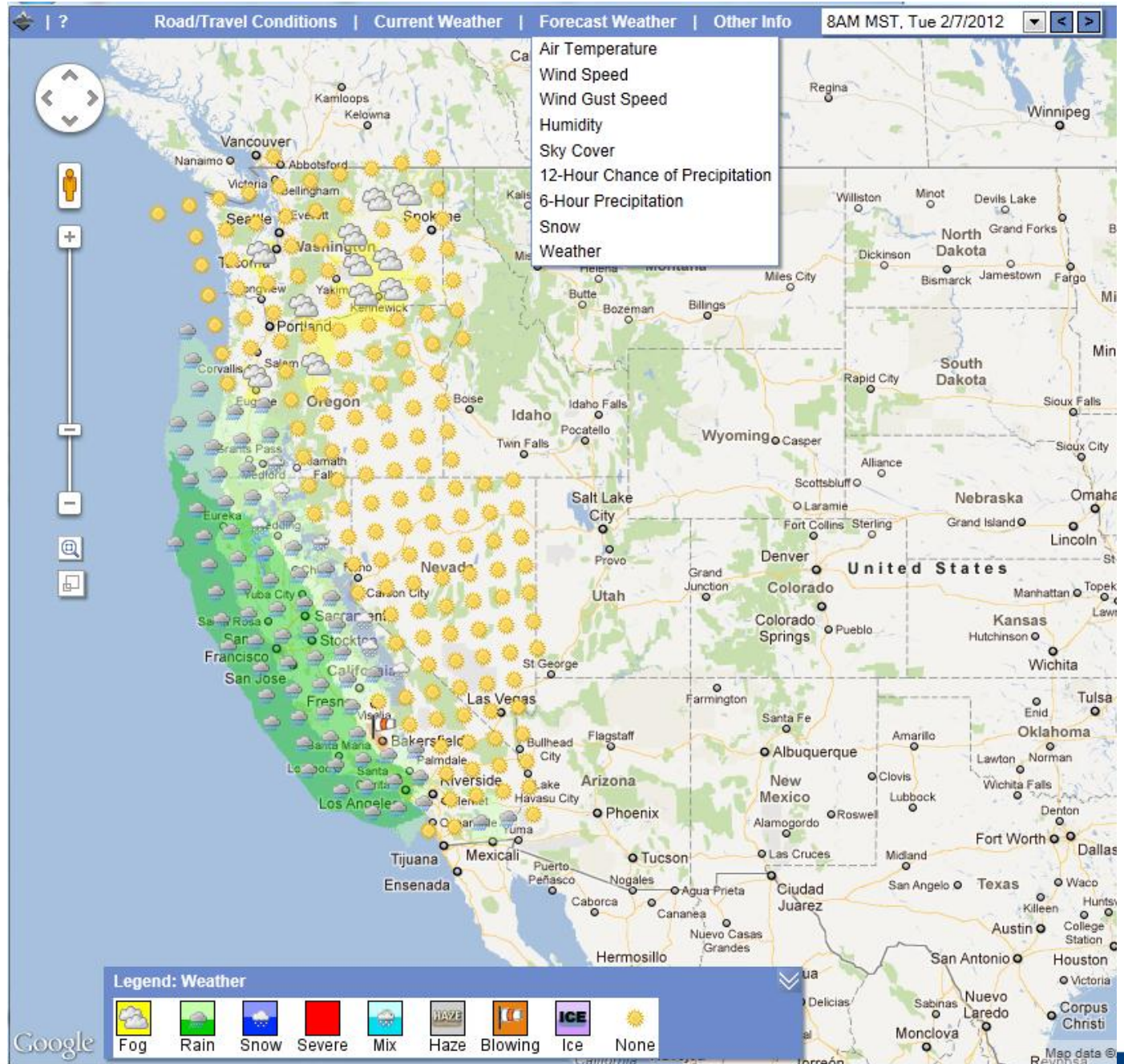
Active CMS **CCTV Camera** **Construction** **Information**

Inactive CMS **Chain Restriction** **Incident** **Commercial Vehicle Information** **RWMS with Road Temp ≤ 32°**

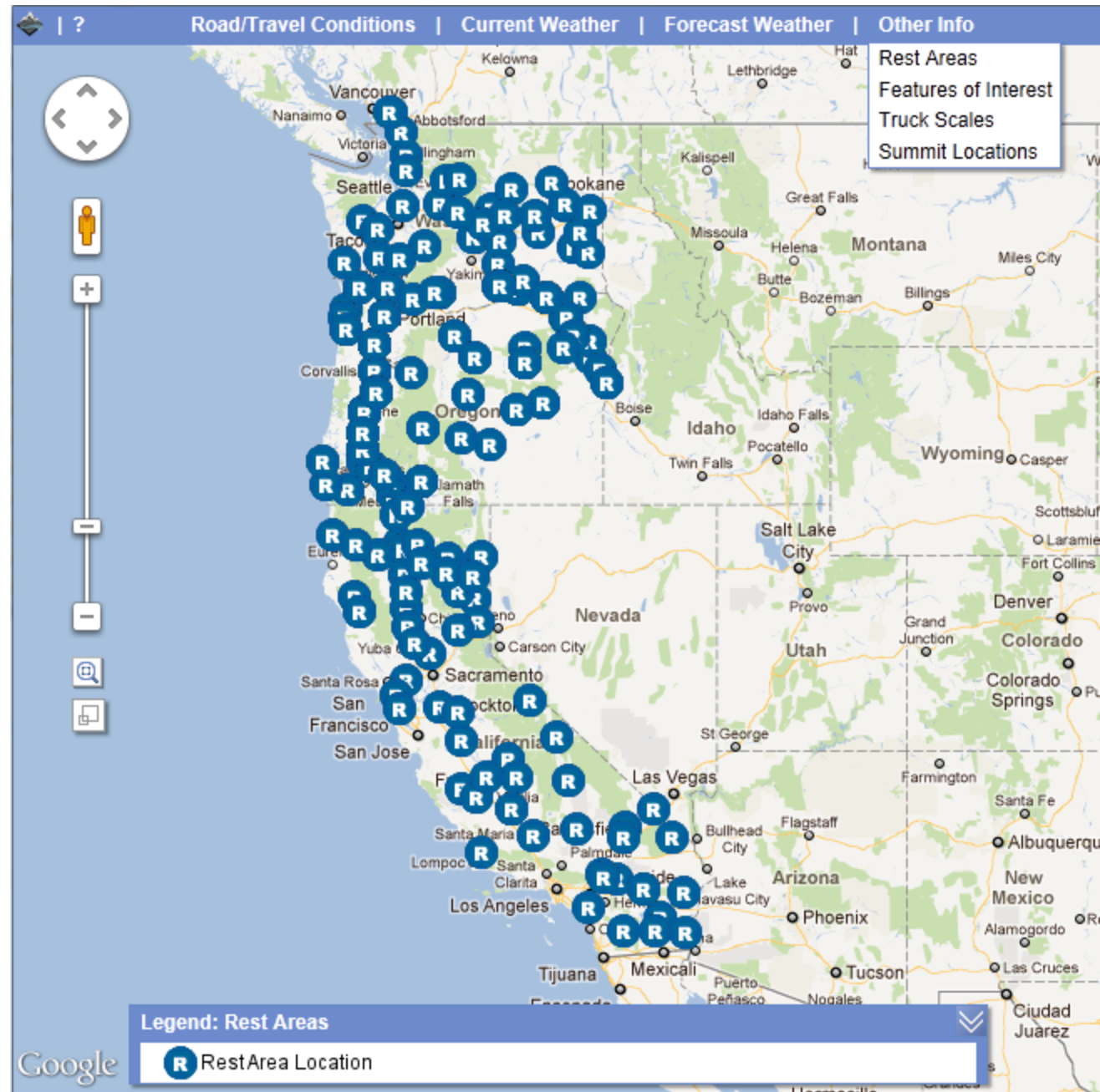
Current Weather:



Forecast Weather:



Other Info:



2 - Pine Grove N/B - Shasta Lake City

Updated: 10:58 AM MST - Wed, Jan 18 2012

**I-5 CLOSED
AT FAUNDALE
DUE TO ACCIDENT**

7:43AM
: 37-56 REDUCING SPD DUE TO RDWY CONDITIONS
7:42AM : 1039 CODE 20
7:41AM : ADV
RESPONDING UNIT JNO ANTLETS THE RDWY IS REALLY SLICK
7:40AM : 1039 CORNING TA

7:40AM : 1039 SHASCOM REF FRWY CLOSURE
7:32AM : 1039 SHAS CDF
7:31AM : STATES
SHE IS INJURED
7:30AM : 1039 37-51 // ERNT
7:30AM : 1039 CT

7:30AM : NUMEROUS VEH INVOLVED // 90-C116 GOT HIT FROM THE BACK
7:30AM : 1039 SHASCOM

7:29AM : A TOUR BUS CLIPPED THE BACK OF A BIG RIG CAUSING IT TO TC INTO OTHERS
7:29AM : 3-4
BIG RIGS INVOLVED
7:29AM : RP ADVS HE WAS CHANGING UP & WAS HIS BIG RIG TANKER WAS HIT

7:29AM : BIG RIG , MAIL TRK , A BUS & OTHER TRKS INVD
7:28AM : APPROX 4 VEHS INVD

Responding
Officer Status:
7:37AM : CHP Unit Enroute
7:47AM : CHP Unit On Scene

7:50AM : CHP Unit On Scene
7:51AM : CHP Unit On Scene
8:01AM : CHP Unit On
Scene
8:50AM : CHP Unit On Scene
9:12AM : CHP Unit On Scene
9:45AM : CHP Unit On Scene

Vollmers

10:31 AM MST - Wed, Jan 18 2012



Faundale

10:59 AM MST - Wed, Jan 18 2012



Hilt Sandhouse

10:33 AM MST - Wed, Jan 18 2012



Siskiyou I-5 NB at Exit 1

Updated: Jan 18 2012 10:20 AM



Central Dunsmuir

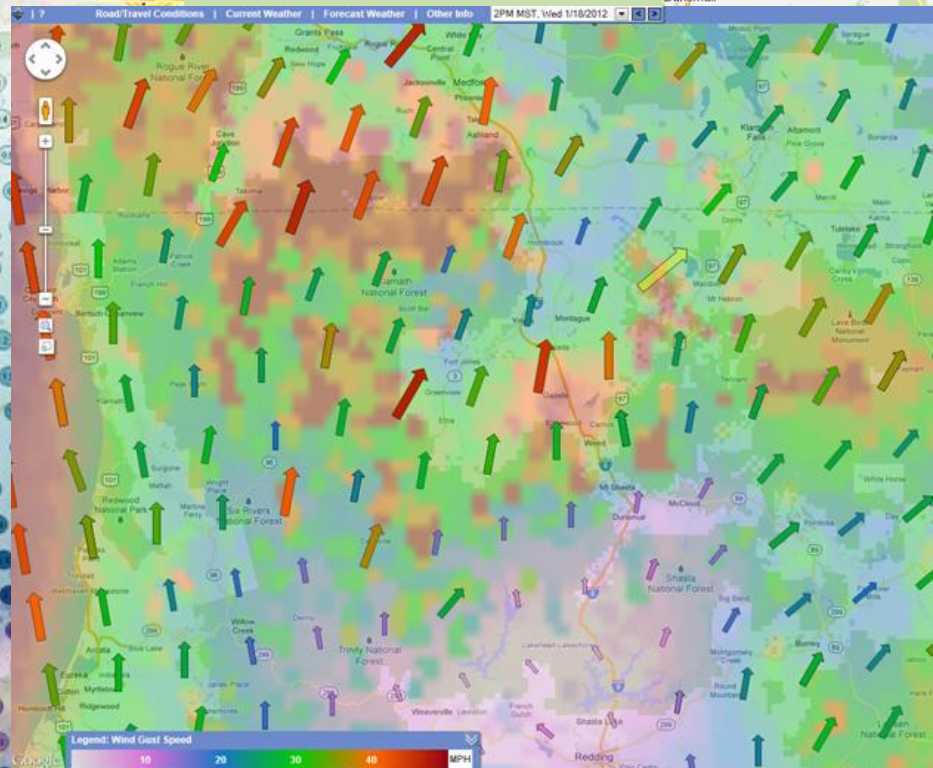
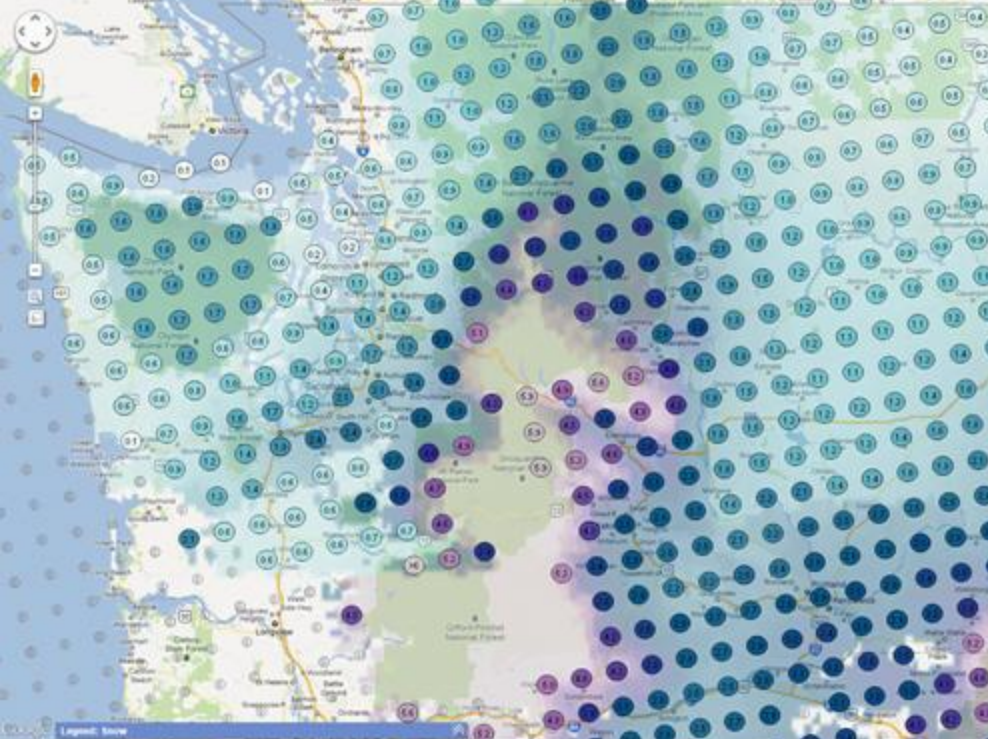
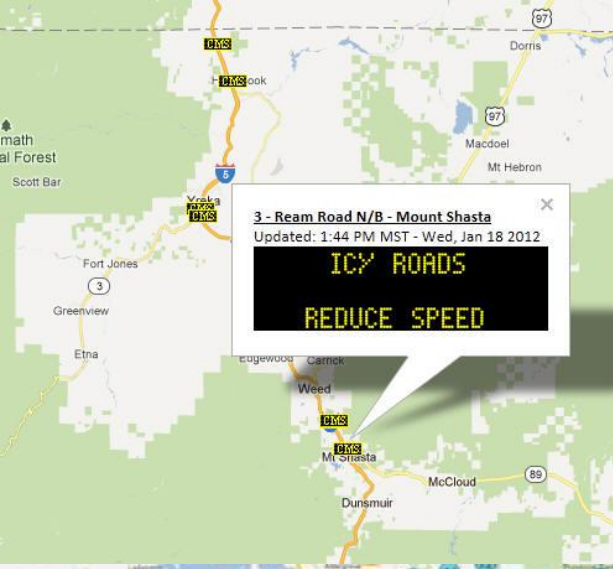
10:19 AM MST - Wed, Jan 18 2012



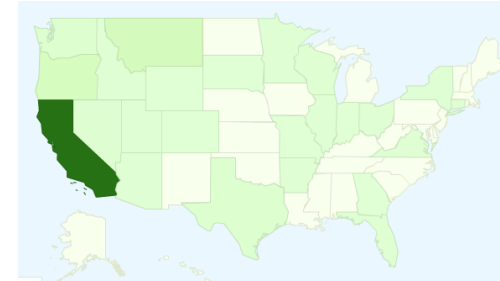
Weed Airport

10:43 AM MST - Wed, Jan 18 2012





OSS Usage



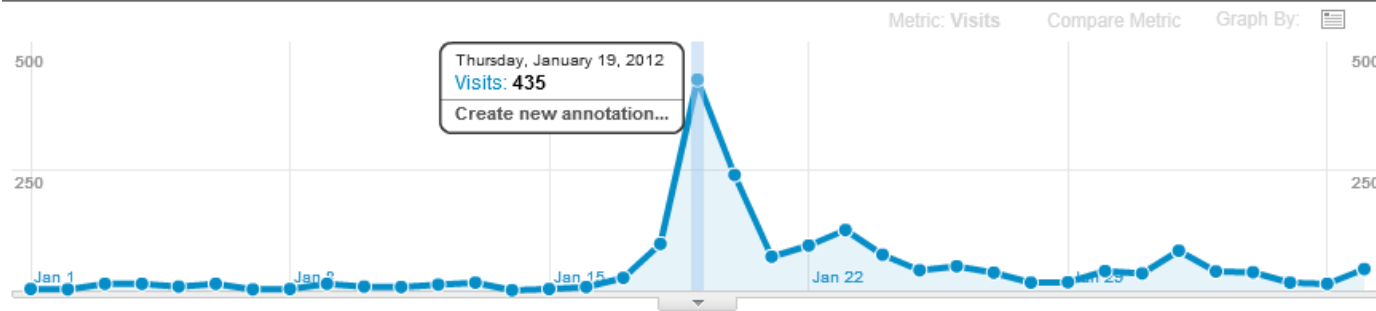
California	1,455
Montana	99
Oregon	83
Washington	21
Texas	20
Nevada	11
Wisconsin	9
Florida	6
Illinois	5
New York	5
Ohio	5
Arizona	3
Arkansas	2
Connecticut	2
District of Columbia	2
Idaho	2
Minnesota	2
Utah	2
Virginia	2
Colorado	1
Georgia	1
Indiana	1
Missouri	1
South Dakota	1
Wyoming	1
	1,742

Visitors Overview

100.00% of total visits

Jan 1, 2012 - Feb 6, 2012

Overview



1,098 people visited this site

1,755 Visits

1,098 Unique Visitors

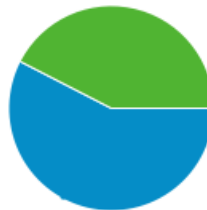
0 Pageviews

0.00 Pages/Visit

00:03:47 Avg. Time on Site

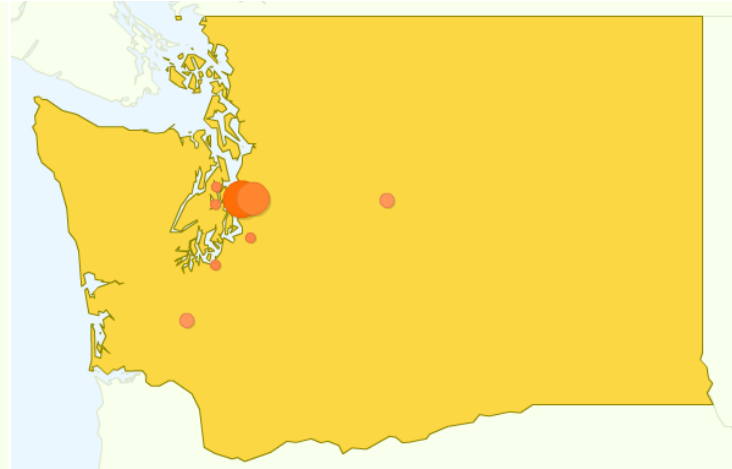
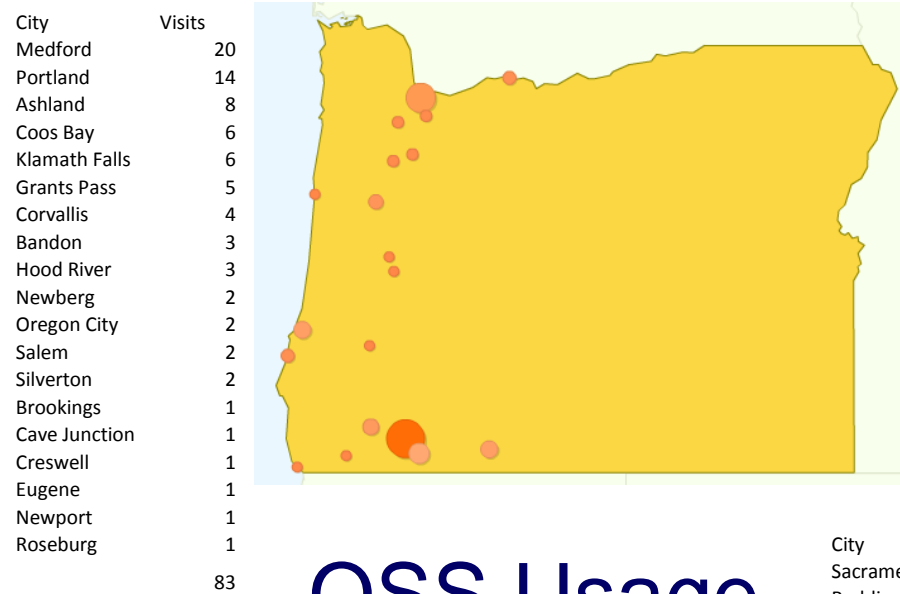
0.00% Bounce Rate

57.61% % New Visits



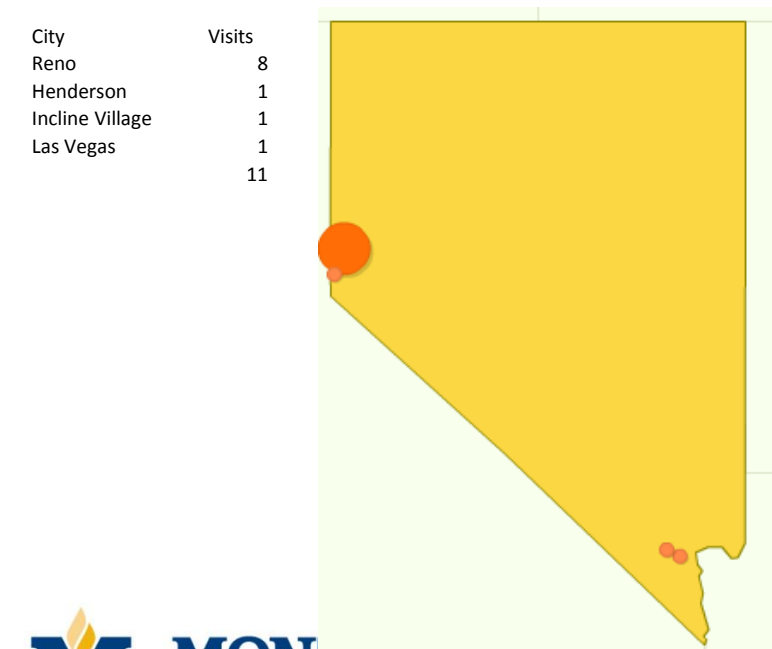
57.55% New Visitor
1,010 Visits

42.45% Returning Visitor
745 Visits

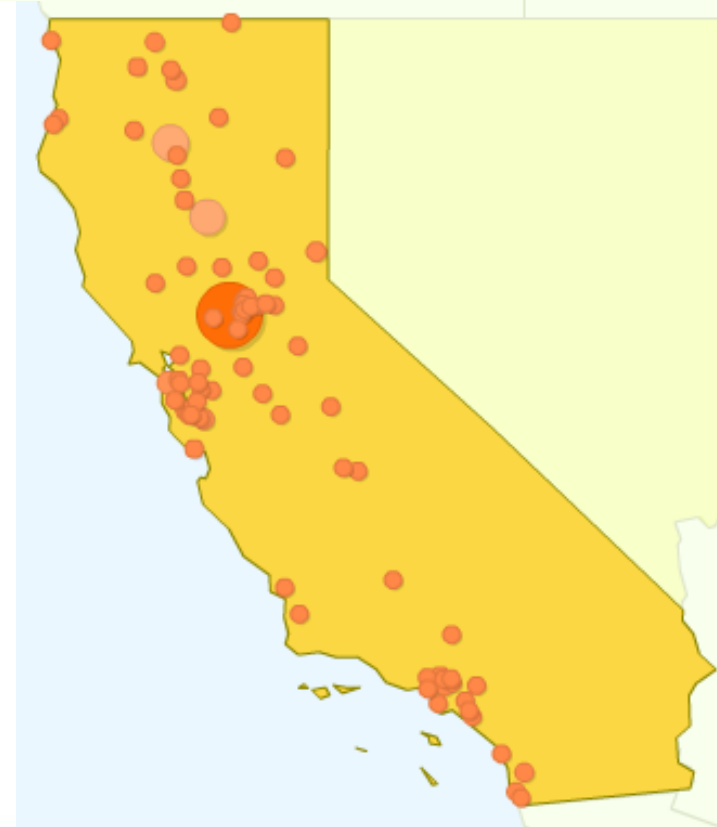


City	Visits
Seattle	7
Bellevue	6
Chehalis	2
Leavenworth	2
Auburn	1
Bremerton	1
Dupont	1
Keyport	1
	21

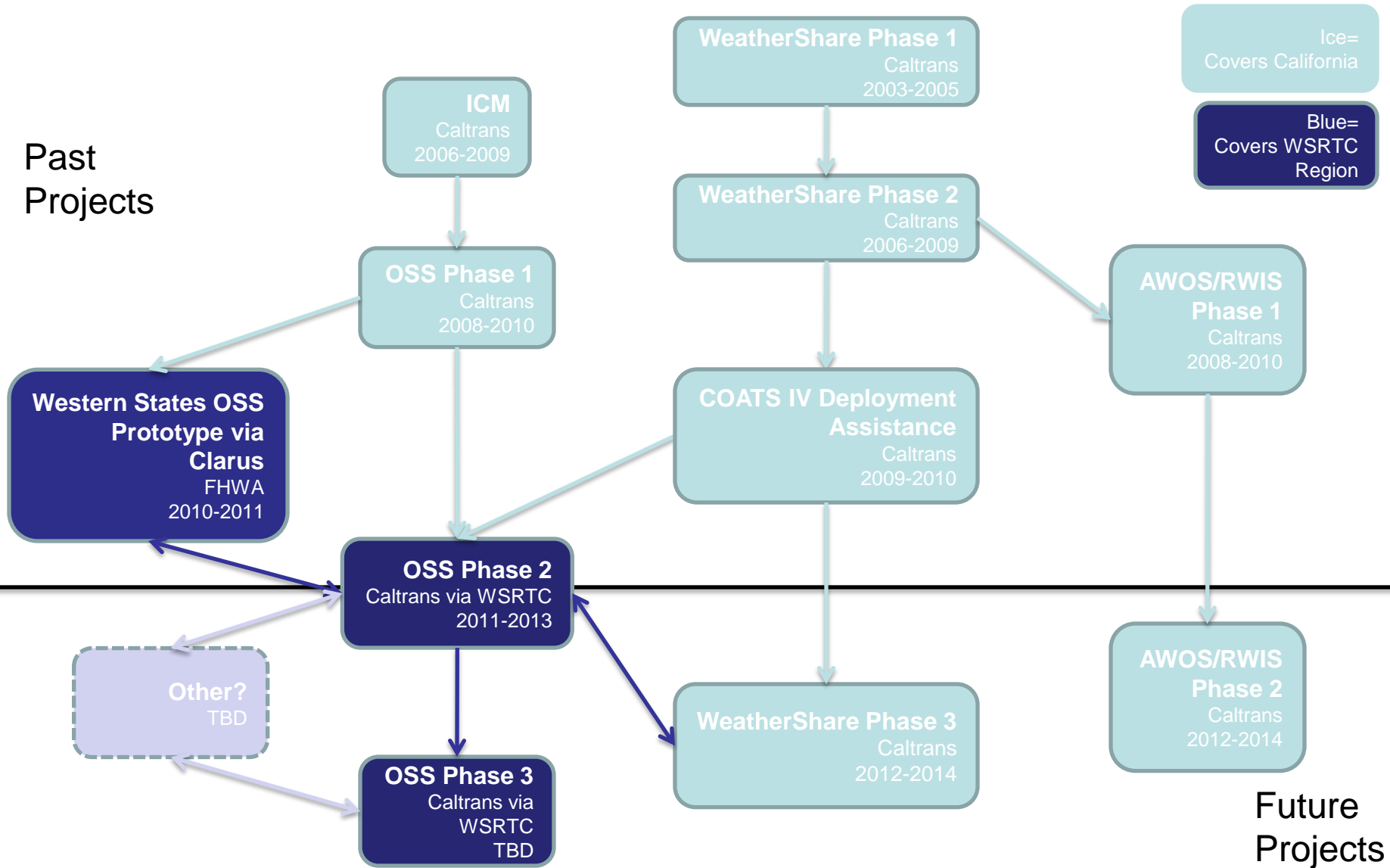
OSS Usage



City	Visits
Sacramento	603
Redding	233
Chico	226
San Francisco	74
San Jose	45
Mount Shasta	26
Truckee	25
San Diego	14
Yreka	13
Poway	12
Los Angeles	11
Santa Clara	9
Santa Cruz	9
Corning	8
Oakland	8
Burbank	7
Etna	7
Red Bluff	6
Weaverville	6
Carmichael	5
Stanford	5
Susanville	5
Yuba City	5
Chula Vista	4
Foresthill	4
...	...
	1,455



Prior and On-Going Investment in OSS



Other Ongoing/Upcoming Projects

Automated Safety Warning Controller (Phase 2 in Progress)



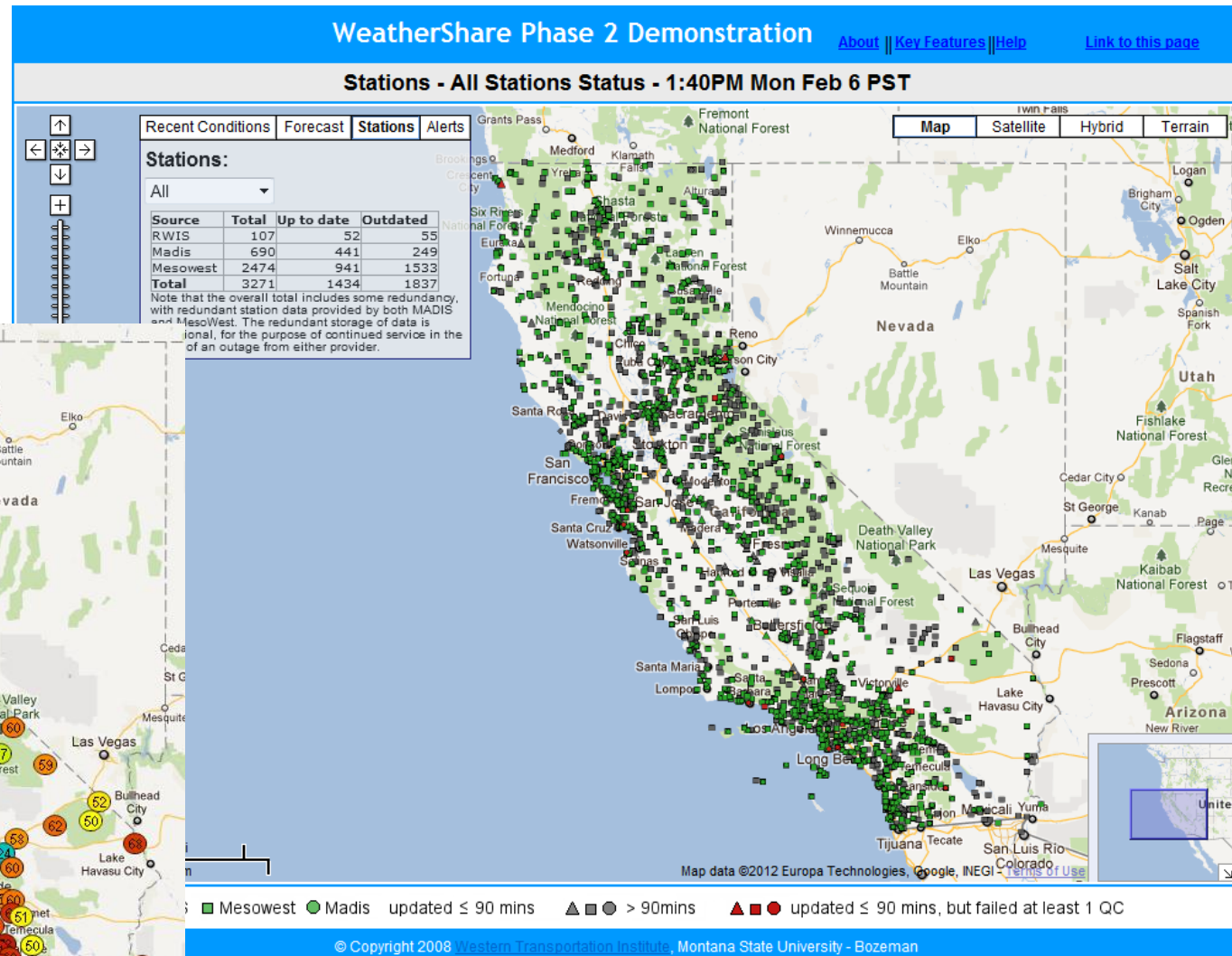
Professional Capacity Building (PCB) for Communication Systems

(Phase 2 in Progress)



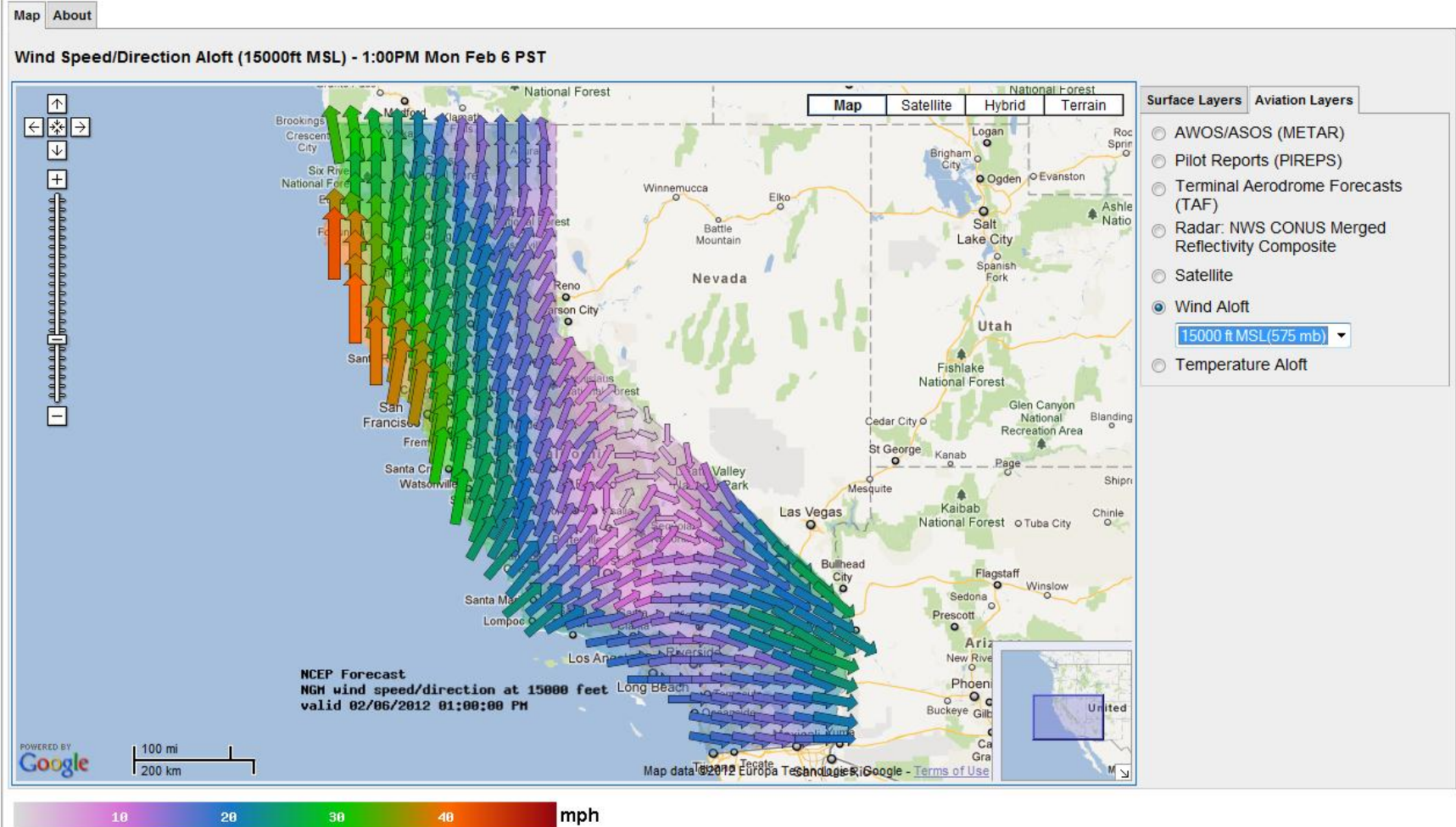
WeatherShare: <http://www.weathershare.org/>

(Phase 3
coming soon ...)



Integration of Aviation AWOS with RWIS

Integration of Aviation Automated Weather Observation Systems(AWOS) with Roadside Weather Information System(RWIS) Demonstration



© Copyright 2009 [Western Transportation Institute](#), Montana State University - Bozeman

(Phase 2 coming soon ...)

Redding Responder (Phase 3 Coming Soon)

Responder Incident Organizer

Redding Responder Incident Organizer

Summary | Mapping | Photos | Weather | Sketches | Messaging | ☐ Incident Closed

Responder Summary:

Organization: Date:

District: Time:

Observer:

Description:

Rockslide 1.5 miles west of Pulga. Includes more than 200 yards of material including some weighing well over 200 tons.

Facility:

Incident Type:

Location:

Latitude: Longitude:

Road / Address:

Mile Marker / Landmark:

City:

County: State:

Maps and Location Data Set to Current Location

Responder Incident Organizer

Redding Responder Incident Organizer


Summary | Mapping | Photos | Weather | Sketches | Messaging |

sketch 1 | sketch 2 | **sketch 3** | sketch 4 | sketch 5 | sketch 6 | sketch 7 | sketch 8 | sketch 9

Description:

Pen Color:

☒ email



Task Order 1 Update

Travel Support and Website
Maintenance

Task Order 3 Discussion

NRITS 2012 Discussion

NRITS 2012

- September 16-19, 2012, Biloxi, Mississippi
- Initial attendance plans?
- Do we want to do a WSRTC meeting?
- Informal get-together/discussion by attendees?

Roundtable of Recent ITS Activities

Other Discussion

Items

- Upcoming meetings
- Action items

Wrap-up