

Western States

Rural Transportation Technology Implementers

Forum

2013

June 18-20, 2013
Holiday Inn Express
Yreka, California



www.westernstatesforum.org

What Is It?



The Western States Rural Transportation Technology Implementers Forum is a two-day meeting where professionals involved with implementing transportation technology solutions exchange detailed technical information about how solutions are engineered and implemented. It is a time for dynamic discussion of practical and technical issues associated with rural ITS, to promote transferability of solutions and knowledge across the ITS community.

The Forum places high importance on the following:

Technical content.

Presenters delve into how solutions were developed, focusing on applications that have been deployed in the field and are being used in live traffic situations. Technical presentations are planned for one to two hours each, ensuring that this level of detail may be presented and understood.

Discussion.

Attendance is limited and extended time is allocated to facilitate and encourage detailed technical discussions.

Transparency and trust.

Presenters will discuss not only successes, but also failed and problematic deployments, so participants can learn about what does and doesn't work and why.

Who should attend?

ITS technology practitioners at the state and local level:

- Field engineers and maintenance staff
- Systems integration/networking engineers
- Wireless/communications technicians

When and where is it?

June 18-20, 2013, at the Holiday Inn Express in Yreka, California.

www.westernstatesforum.org



Starting in 2006, we and many of our peers have met annually for a peer exchange event called the Western States Rural Transportation Technology Implementers Forum. The Forum has provided ITS implementers and engineers with a valuable opportunity to engage in a detailed level of discussion about some innovative ITS engineering projects designed to support the rural transportation system. We have found the Forum valuable, not only for the detailed and knowledgeable presentations, but also for the times outside of sessions where we could network with our peers from several western states.

We are pleased to announce to you that the 8th annual Western States Forum will take place June 18-20, 2013, in scenic Yreka, California, through the Western States Rural Transportation Consortium (WSRTC). We promise continued excellence in technical content along with a range of new technical topics. Due to the favorable response to demonstrations and equipment displays, we are again encouraging attendees to bring technologies to demonstrate to their peers.

The Western States Forum is not like other meetings. You will see that we provide extended time for each presentation, allowing speakers to get into a far greater level of detail about the projects, whether it relates to equations, source code or component-level discussion -- basically the nuts and bolts of how a project works. This is a technically targeted event with a cap on the number of people who attend. This has helped to create a more informal atmosphere allowing for a freer exchange of ideas and a better chance to network with peers. Through WSRTC sponsorship, we have been able to make this event quite affordable. Lodging at the Yreka Holiday Inn Express is available at the state government rate and the cost of all meals will be covered.

Again in 2013, there is no registration fee. With the networking opportunities, in-depth and relevant technical program, excellent location, low cost, and quality facilities, this will be an event you won't want to miss.

We hope you will join us June 18-20 in Yreka!

Sean Campbell, P.E.

*Chief, ITS Special Projects Branch
Caltrans Division of Research and Innovation*

Ian Turnbull, P.E.

*Chief, Office of ITS Engineering and Support
Caltrans District 2*



Tuesday, June 18, 2013

4:00-7:00 pm Registration

5:00-6:30 pm *No-Host Social*

6:30-9:00 pm *Dinner Reception*

Wednesday, June 19, 2013

7:00-8:00 am *Breakfast*

8:00-8:15 am Welcome and Introductions

8:15-12:00 pm Technical Presentations

12:00-1:00 pm *Lunch*

1:00-5:00 pm Technical Presentations

5:00-5:15 pm Comments/Evaluations

5:45 pm *Evening Dinner/Social*

Thursday, June 20, 2013

7:00-8:00 am *Breakfast*

8:00-12:00 pm In-depth Equipment Demonstrations/Presentations

12:00-12:45 pm *Lunch, Check-Out*

12:45-1:45 In-depth Equipment Demonstrations/Presentations

1:45-2:00 pm Concluding Remarks /Evaluations



- Automated Wind Warning System – Caltrans District 9
- Bike Detection in California
- CCTV Image Relay
- Design and Implementation of Nevada DOT's Point to Point and 3G/4G Networks for Rural ITS
- Design and Implementation of Video for Rural ITS – Nevada Department of Transportation
- Error Assessment for Emerging Traffic Data Collection Devices
- Field Element Data Quality Control from the Perspective of Data Redistribution
- Procuring the Advanced Transportation Controller (ATC) for the Oregon Dept. of Transportation and the State of the National Standards
- Winter Maintenance Performance Measures – Idaho Transportation Department

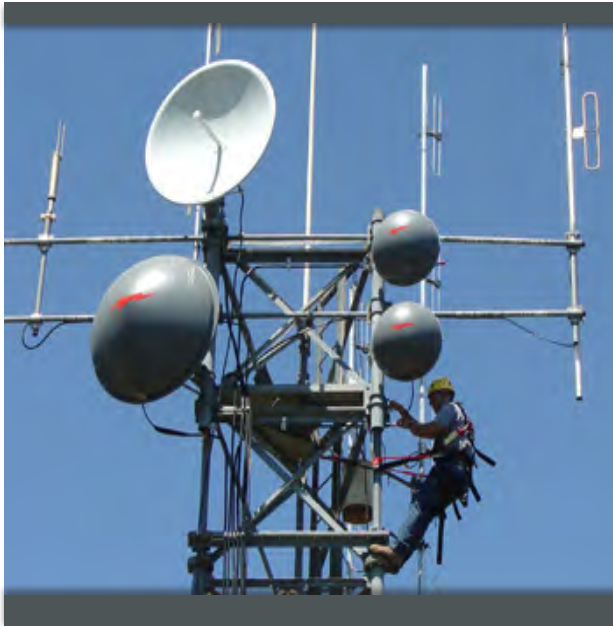
PREVIOUS PRESENTATIONS



The following partial list of presentations from previous Forums will give you a sense of diversity and depth of topics covered at this meeting.

- A Tale of Two RWISs (RWIS Trials and Tribulations)
- California Highway Patrol (CHP) Rapid Response Vehicle
- Field Element Network Design for a Rural Transportation Management Center
- Field Experiments with Bluetooth Sensors
- Microwave Communications for Rural ITS Applications
- Photovoltaic Power Systems for Rural ITS
- Technical Development of the Western States One Stop Shop for Rural Traveler Information
- Washington DOT Field Tests of Wireless and Microwave Vehicle Detection Systems
- Weather Warning Systems in Oregon and Region 5 Interstate Access Gates

See www.westernstatesforum.org/PastForums/ for a complete list of presentations from previous Forums.



REGISTRATION FORM

Please register by May 17th

- Completed registration forms can be submitted by email, fax or mail.
- Attendance is limited. Registration will close when the maximum number is reached or on May 17th, whichever comes first. Registration after the deadline will be dependent on space and lodging availability.
- To make your lodging reservations please call the Yreka Holiday Inn Express by May 17th, 2013.

Name	Title	Organization		
<hr/>				
Address				
Street	City	State	Zip	
<hr/>				
Contact				
Daytime Phone	Fax Number	Email		

**Guests are welcome and encouraged to attend the events listed below.*

Contact Leann Koon at the Western Transportation Institute for more information; (406) 994-7643.

Guests? Yes No If Yes, please indicate how many: _____

Participant meals

Please check the box if you will be participating in the following event meals.

- Breakfast is included as part of lodging.
- If you marked yes for guests, a follow-up contact will be made to confirm guest meal and activity selections.

Tuesday, June 18th, Dinner Reception _____

Wednesday, June 19th, Lunch _____

Wednesday, June 19th, Dinner/Social _____

Thursday, June 20th, Lunch _____

If you have any special dietary needs, please check here. _____

For additional information, please contact Leann Koon:

Phone: (406) 994-7643; Email: leann.koon@coe.montana.edu

Submit Registration Form

Fax: (406) 994-1697

Mail: Western Transportation Institute, Montana State University, PO Box 174250, Bozeman, MT 59717-4250



LODGING AND RESERVATIONS



Holiday Inn Express: Yreka-Shasta Area

www.hiexpress.com/hotels/us/en/yreka/rkcir/hoteldetail

• Please call or email the Holiday Inn Express—Yreka-Shasta Area directly to make a lodging reservation;

Phone: (530) 842-1600

Email: hiexpressyreka@gmail.com

Attention: Ravi Brar

Include:

- last name • first name • phone number
- mailing address • state • zip code
- check-in date • check-out date
- number of people

If making a reservation by email, the hotel will respond with a follow-up call to issue a confirmation number and collect payment information.

- The group reservation name is “Western States Forum.”
- A credit card will be required to hold your room reservation and at check-in. Room charges will be made upon check-out.
- **Please make reservations by May 17th.**

Lodging Options*

• **Double bed room**

- 2 queen beds
- \$84.00 plus tax/night
- = \$92.40/night

• **King room**

- 1 king bed
- \$84.00 plus tax/night
- = \$92.40/night

*Availability of each accommodation type within the block is limited and reservations will be filled on a first come first served basis.

The lodging block is available for individual reservations to be guaranteed with a major credit card at the time of booking.

Cancellation Policy

In the event of cancellation, the individual group member will be responsible for the cancellation charges for his or her own reservation (with the credit card on file). No charges will be incurred if the cancellation notice is received more than 24 hours prior to the date of check-in. If the reservation is cancelled less than 24 hours before the scheduled arrival date, the individual will be responsible for the full room charge.

DIRECTIONS



From Interstate 5, take exit 776 towards Yreka/Montague. Head east on CA-3/Montague Road. Hotel is situated immediately off the Interstate.

From Interstate 5 north bound, take exit 776 towards Yreka/Montague. Turn right at the stop sign to head east on CA-3/Montague Road. Turn right at the first signal light and loop around to the front entrance of the hotel.

From Interstate 5 south bound, take exit 776 towards Yreka/Montague. Turn left at the stop sign to head east on CA-3/Montague Road. Turn right at the first signal light and loop around to the front entrance of the hotel.

Closest airports:

Medford, OR: 52 miles to the north on Interstate 5
Redding, CA: 103 miles to the south on Interstate 5

Printable version available on the web www.westernstatesforum.org

